

1 Imperial VPN

If you are not on the Imperial Campus, make sure you are connected to the Imperial VPN!

<https://www.imperial.ac.uk/admin-services/ict/self-service/connect-communicate/remote-access/virtual-private-network-vpn/>

Note that to connect to Imperial VPN you need to use your college login details.

If you have not got it setup already you can find all the information on how to set it up [HERE](#)

<https://www.imperial.ac.uk/admin-services/ict/self-service/connect-communicate/remote-access/virtual-private-network-vpn/>

Virtual private network (VPN)

ICT recommends that you use Remote Desktop Gateway or cloud-based/public-facing services where possible.

For those wanting to access a College Mac or Linux machine, please visit our [Remotely access my College computer](#) for information.

However, if you do require access to the College network using VPN, please see instructions below:

N.B: Access to the VPN may also depend on the country you're in when you try to connect. Please see our page on [internet censorship](#) for more information.

Set up the VPN on your device

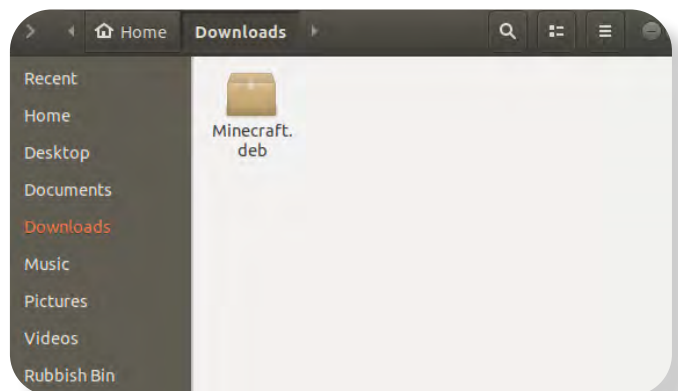
[Expand all](#)

2 Minecraft Installation

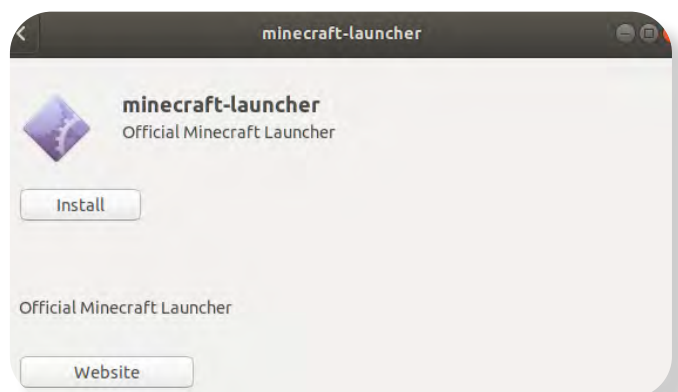
Download the Linux Debian or Arch Minecraft installer from

<https://www.minecraft.net/en-us/download/>

Double click the minecraft.deb file located in your downloads folder.

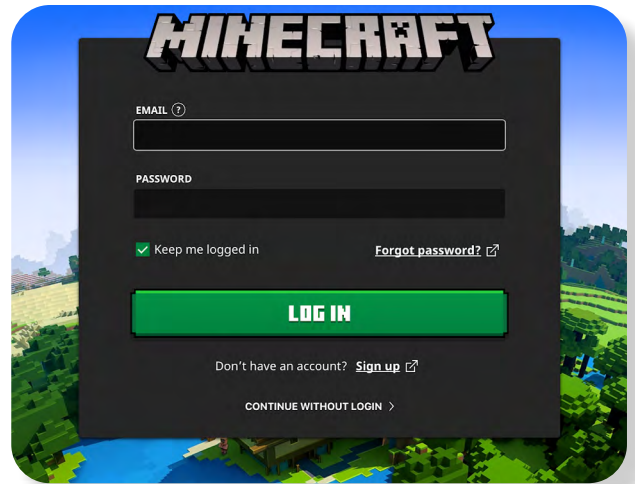


A window will open click "Install".



Once the installation is finished you can open the Minecraft launcher from your Applications.

You will be asked to input your Minecraft account details. After doing so, click on “LOGIN”.

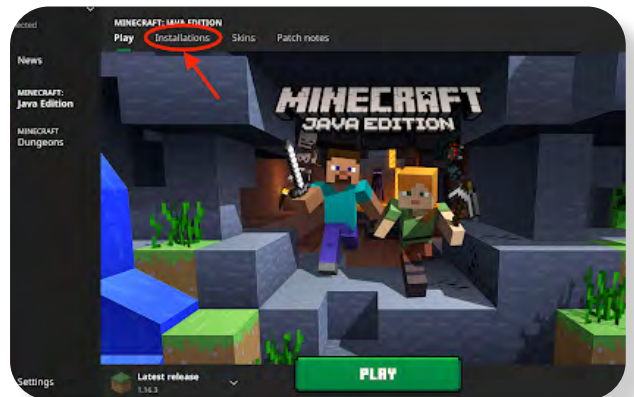


3 Minecraft Set-Up

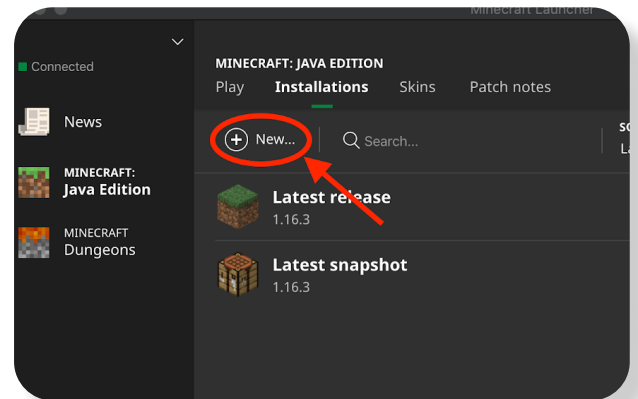
You only have to follow these steps once when you first join!

Open the Minecraft launcher but do not press play. You will see the following window.

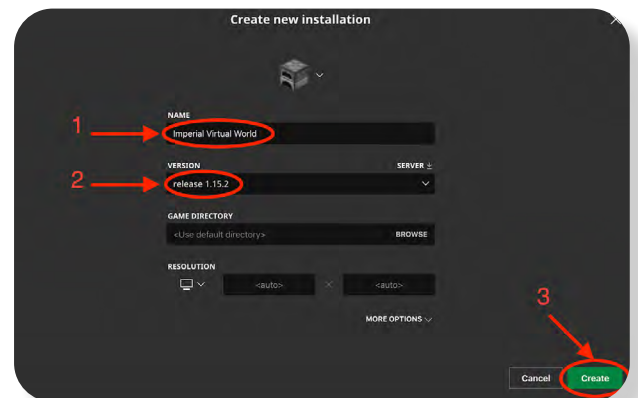
In the top menu, click the “Installations” button.



Create a installation by clicking “New”.

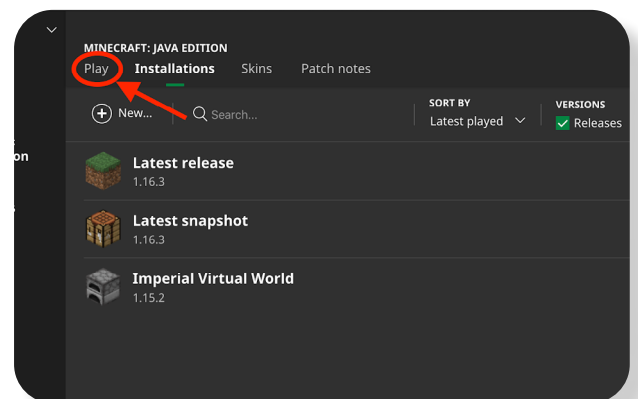


Give the new installation a name (for example “Imperial Virtual World”), and from the version drop-down menu select “release 1.15.2”.



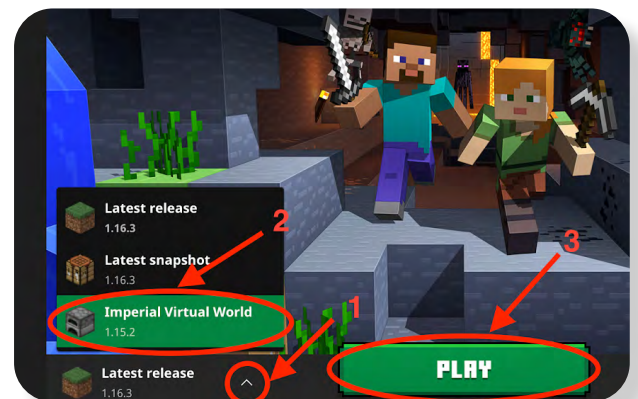
Leave everything else unchanged and press “Create”.

You should now see your new installation in the list.



Press the “Play” button in the top menu to return to the main screen.

Select the installation that you just created from the drop-up menu and click “Play”.



Minecraft will open.

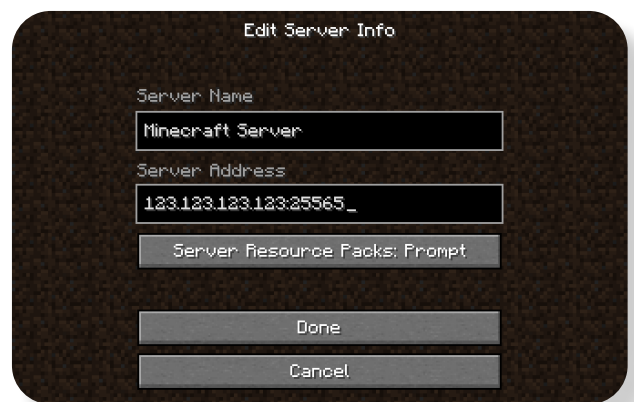
Make sure that before you enter the game you are connected to the Imperial VPN as instructed in the steps above.

Select “Multiplayer” then select “Add Server”.



Input a server name of your choice and the IP address and port of the world that you wish to join.

Press “Done”.



Double-click on the server that you just added.

You will now enter the Imperial College Virtual World, enjoy!

